

INSTRUMENT APPROACH CHART - ICAO

BEARINGS ARE MAGNETIC
ELEVATIONS IN FEET AMSL
HEIGHTS IN FEET ABOVE
AERODROME ELEVATION (1259)

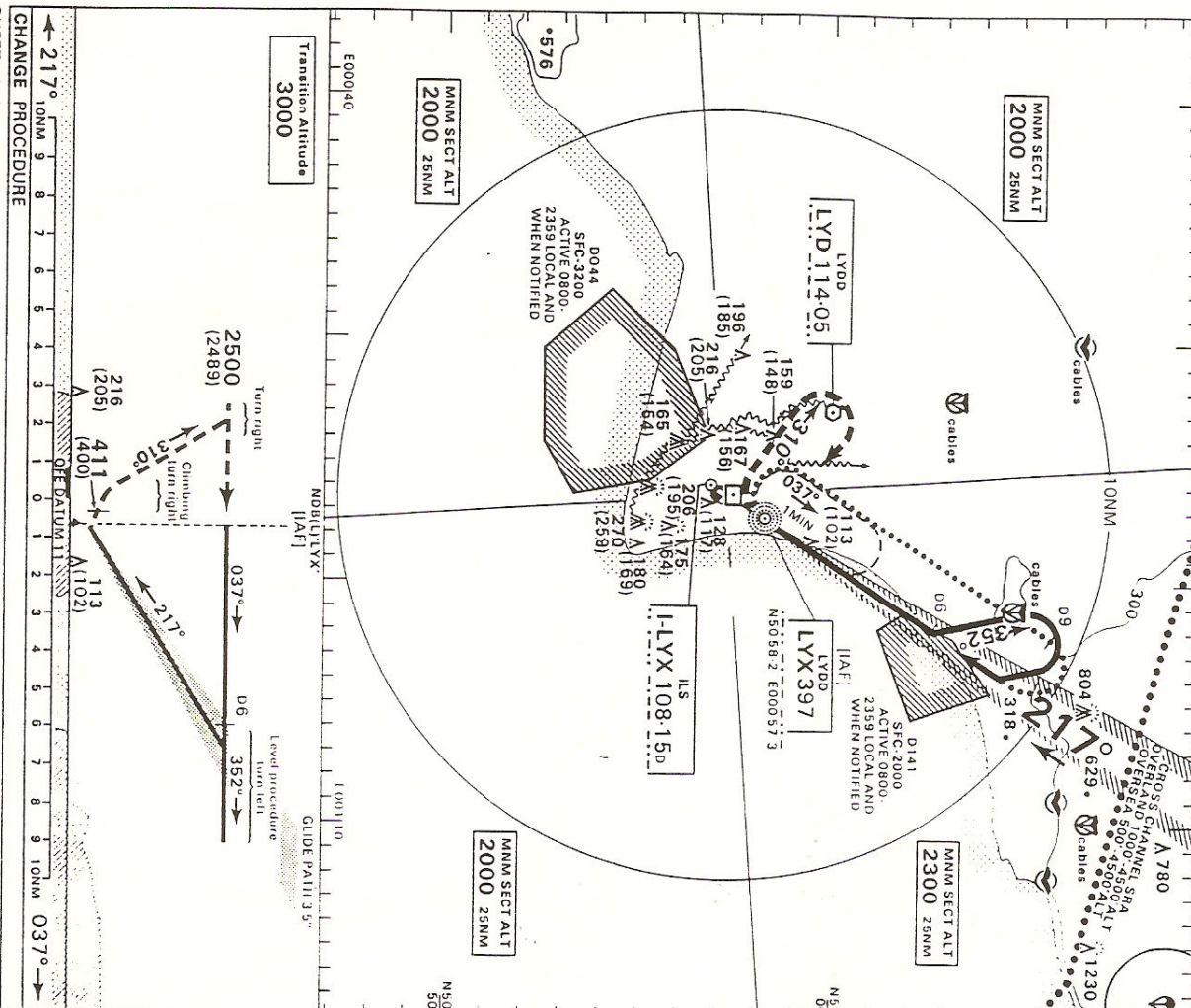
ELEV 11FT
VAR 4°W

ACFT
CAT
A,B,C

LYDD
ILS/DME RWY 22

N50 57.27 E000 56.37

IFR APPROACH



MISSSED APPROACH PROCEDURE
Climb straight ahead to 411(400) then climbing turn right onto track 310°M. Continue climb to 2500ALT, then turn right to return to NDB/ILS at 2500ALT, or as directed by ATC.

ALTERNATIVE PROCEDURE EXTENDED HOLDING PATTERN
Extend outbound leg of holding pattern to 1-LYX DME 9. Turn right to intercept localizer. When established descend on glidepath to Decision Height.

AIRCRAFT UNABLE TO RECEIVE 1-LYX DME SUBJECT TO ATC.

BASIC PROCEDURE - Fly outbound for 2.5MIN (Cat A,B); 2MIN (Cat C); then procedure turn left.

ALTERNATIVE PROCEDURE - Extend outbound leg of holding pattern 3.5MIN (Cat A,B); 2.5MIN (Cat C); then turn right to intercept localizer.

OBSTACLE CLEARANCE ALTITUDE/HEIGHT	A	B	C
AIRCRAFT CATEGORY PROCEDURE	331(320)	331(320)	331(320)
VISUAL MANOEUVRING	571(560)†	571(560)†	671(660)†
Clockwise 207°M to 15.4°M	521(510)†	521(510)†	
LOWEST ALTITUDE	1500 (Aircraft will normally be required to hold not lower than 2500 or equivalent flight level)		

NOTE
1-LYX DME zero ranged to threshold RWY 22.

WARNINGS
1 Danger Area D141 is close to final approach track. Do not descend below 2000 ALT before 1-LYX DME 5.5.
2 When Danger Area D044 active do not delay turn onto 310°M when carrying out missed approach. Max IAS 160KT until established on 310°M.
3 Do not overfly Dungeness Power Station below 2000 ALT.
4 Coupled approaches not allowed below 200 ft.

Appendix 2