

[Home](#)[Airlines](#)[Corporate](#)[Pilots](#)[Passengers](#)[Community](#)[About LAA](#)[Contact Us](#)

## London Ashford Airport

Serving a strong regional market with access to London.

### LAA Airline Information

To ensure that you have the latest statistical analysis contact **Robin Gordon LAA Marketing Director**

#### The Case For Lydd

An overview of the commercial and locational advantages of London Ashford (Lydd) Airport. **The case for Lydd** (4.9M Pdf). There are strong reasons to locate in Kent. See [www.locateinkent.com](http://www.locateinkent.com)

#### LAA facilities include

Passenger and aircraft handling, catering, Jet and AVGAS fuel, engineering facilities and hangarage.

#### FAL Aviation

Have chosen to establish their UK operation at London Ashford Airport.

#### Airlines are assured of a bright future at LAA

The ongoing improvement programme at LAA only represents part of a planned strategy to advance the airport to 2m passenger a year capability by 2014.

#### International departing passenger:

£6.50 per check-in and £5.00 for security screening

#### Domestic departing passenger:

£6.50 per check-in and £5.00 for security screening

#### Training

London Ashford Airport Lydd has unrestricted airspace and an excellent weather record for aircraft training providing pilots with instrument and visual approaches.

London Ashford Airport situated in the South-East corner of the UK, conveniently located between Europe and London has established a very competitive rate card for training with no associated handling costs and a competitive fuel price.

Some of the benefits of training at LAA

- newly resurfaced and grooved 1505m runway with a pcn of 46/F/C/X/T
- un restricted airspace
- no runway slots
- outside london tma
- minimal noise restrictions
- no weekend restrictions
- excellent weather record

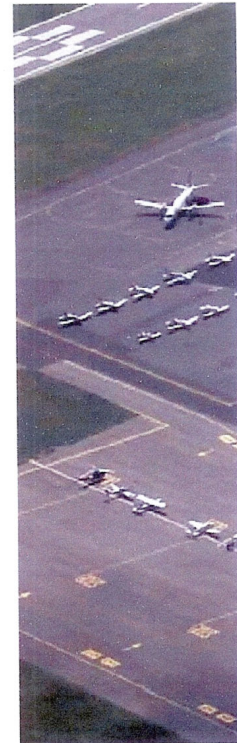
Aircraft training rates based on RFFS category 3

- A full stop landing will be charged at £1.50 per tonne based on full MTOW.
- A circuit will be charged at £1.50 per tonne based on full MTOW.
- An instrument approach both ILS and NDB will be charged at a standard charge of £15.00 per an approach.

Extensions to operational hours and RFFS upgrades to category 5 are available subject to 24hours PPR and additional charges.

RFFS category 4 - £60.00 (applicable for up to 4 hours training).

RFFS category 5 - £130.00 (applicable for up to 4 hours training).



LAA The future of Aviation in South-East England Located 53 miles from London and ten minutes flying time from France - LAA is the environmentally acceptable and safe solution to runway and airspace congestion in the Southeast. Tel: +44 (0)1797 322411. Lydd, Romney Marsh, Kent, TN29 9QL, U.K. **Web Site by Fresh Interactive**